

**D&S**  
**RESOURCES**

**Leaders in Procurement, Project  
Management and Engineering.**

# CONTENTS

**1** Overview

**2** Senior Management

**3** Organisation

**4** Roadmap

**5** Services

**7** Expertise

**8** People

**9** Facilities

**10** Plant and Equipment

**11** Site Project Capability

**14** Accreditation

**12** Memberships

**15** Offices

**16** Principal Contacts

# OVERVIEW

Leaders in Procurement, Project Management & Engineering

D&S is a project management company delivering key management solutions offering engineering and procurement services, recognised for our expertise in the mining sector. Founded in 2015, D&S has grown rapidly to become a national provider with offices in Adelaide, Brisbane and Perth, working on projects in metropolitan, regional and remote areas throughout Australia.

We combine our deep technical design capabilities, capacity and connectivity to deliver technically led advisory services for our Clients. **Our services empower our clients to make well-informed decisions, every time.** We achieve this through our expertise in engineering, design, materials knowledge, manufacturing management, procurement and supply systems.

We have an excellent reputation for delivering projects on time and working in a collaborative way with clients, stakeholders and the wider community. Our experience, capability, financial stability, proven team and outstanding track record makes D&S an ideal partner for complex construction, fabrication, engineering and technology projects.



**Safety**



**Experience**



**Reliability**



**Eduardo Donoso**  
*Director*

Has over 30 years' of Australian and international experience within the heavy engineering, mining, defence and maintenance service industries. He is able to build genuine relationships across large companies and organisations all the way through to government departments.



**Andres Donoso**  
*Managing Director*

Has over 15 years' experience in the finance, defence and mining industries supported by his extensive skillset in corporate finance and commercial law. He is responsible for the daily operations of D&S Resources whilst ensuring the strategic direction & performance of the company.

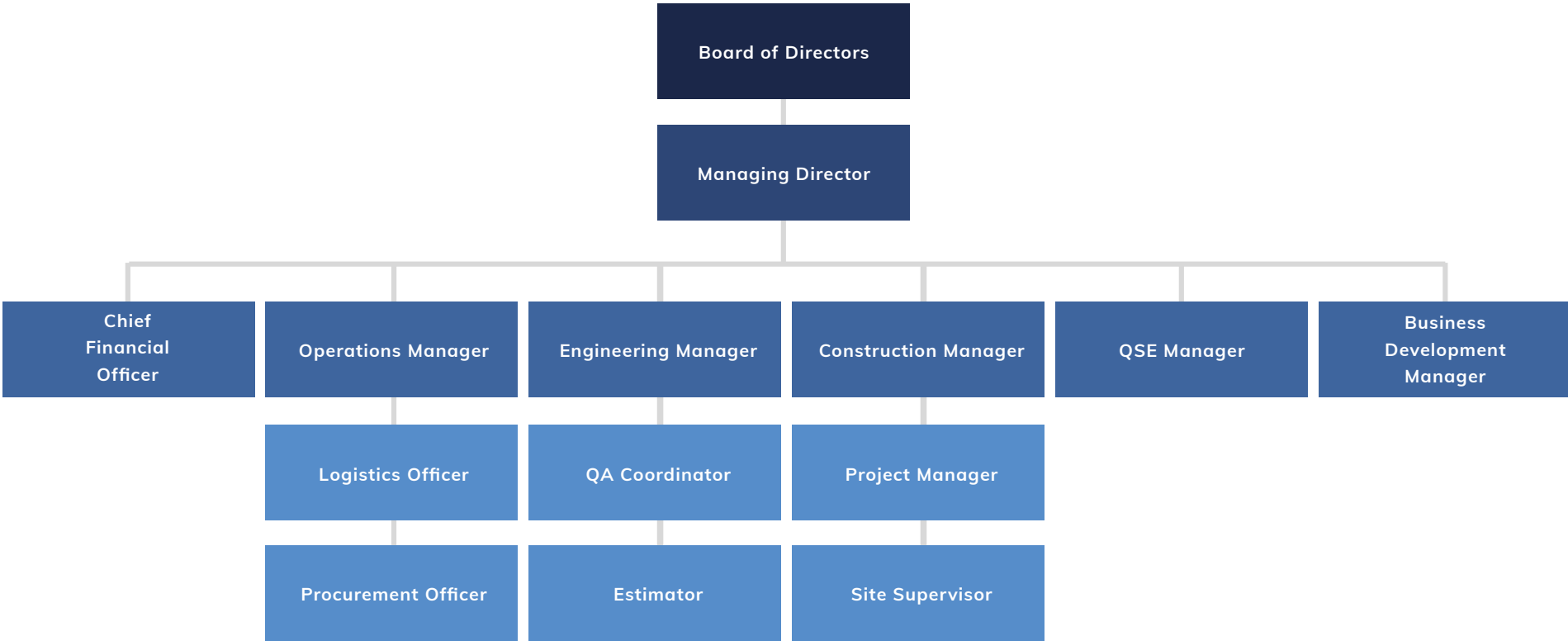


**Joe Kelly**  
*Director*

Joe is a project professional and experienced Construction Manager with over 14 years of experience overseeing large scale projects. Having worked with clients such as BHP and Oz Minerals, Joe understands the importance of project scope, costs and schedule change.

# ORGANISATION

Supporting our strong team of Specialists driven by results.





# ROADMAP

Road to Success into 2023



He joined Louminco as the Operations Manager soon becoming the Managing Director.



Andres joined his Father Eduardo to focus on Donoso & Sons (formally ED Consulting & Engineering Services)



Sold ASG Roxby Downs business unit and branding. Renamed and branded as D&S Resources.

1995

2000

2007

2012

2015

2017

2019

Eduardo started ED Consulting & Engineering Services in Whyalla, SA.



Throughout the merger acquisition of Whyalla Fabrications by EAL the new entity became known as E&A Contractors.



Established Australian Supply Group branch in Roxby Downs, SA.



Built a B2B ecommerce platform for our trade division, launched as Trade Source.



# Our procurement and management expertise offers a high level of service excellence in project outcomes.

End-to-end specialised service and support

- 1 Ensure the best possible price
- 2 Maintain excellence in quality
- 3 Delivery on time to selected location

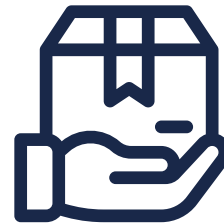
We supply construction, industrial and mining supplies for the defence, civil, mining and resource sectors.

Our strategy is to work with clients, as a **trusted and local business partner**, to deliver value through providing quality, price competitive, innovative and fit for purpose products and solutions.



## Engineering

Mechanical drafting services to fulfil engineering design and drawing requirements of all project scales, complexity and timelines.



## Procurement

We leverage our market knowledge, global supply chain to undertake strategic/complex procurement activities on major projects.



## Project Management

We manage end-to-end from design and construction to operational support, incorporating strong advisory and delivery capabilities.

## PROCUREMENT

- Competitive Sourcing
- Supplier Management
- Strategic Outsourcing
- Quality Products
- Inspected Goods
- Documentation (ITP/MDR)
- QA / QC
- Fit for Purpose

## ENGINEERING

- Design / Drafting
- Fabrication
- Machining
- Site Installation
- Componentry
- Structural / Welding
- Maintenance
- Reverse Engineering
- Mechanical Engineering

## PROJECT MANAGEMENT

- Feasibility Studies
- Labour Solutions
- Vendor Management
- Maintenance
- Safety & Risk Management
- Scheduling
- Mining Support
- Tendering Documentation
- Project management
- Site work

## LOGISTICS

- Transportation
- Warehousing
- Strategic Sourcing
- Freight Forwarding
- Import / Export
- Domestic & Global Logistics
- Container Load - Consolidation
- Regional & Remote Support
- Yard Storage Facility



# EXPERTISE

D&S Resources' management and delivery capabilities provide our clients with certainty in project outcomes.

Over the years we have established successful relationships with a large variety of component manufacturers and suppliers throughout Australia and overseas. Our proven skills in engineering design, construction mobilisation and project management enable us to ensure all engineered components or procurement products meet our customer's high standards.

## Our Difference

With project experience in public and private sectors, we understand the key to project success lies in fostering **strong relationships with our clients** and having an intuitive understanding of their drivers, influences and objectives, whether they are commercial, strategic, transactional, delivery or operationally orientated.

Our collective experience in project management, engineering, procurement and construction management provides our clients with an unprecedented depth of knowledge across all types and sizes of projects, as well as more complex design and delivery.

## How We Deliver

To deliver technically-led advisory services that empower Clients to make well-informed decisions, we have leaders across our network with a combination of experience and technical expertise.

We use computer-aided design systems to develop successfully tailored solutions to meet our Client's requirements for professionally engineered and designed components.

Our program and project management systems and tools are based on global best practice methodologies such as PMBoK® and Prince2®. We also use industry leading program and project controls and information management systems, developed specifically for their flexibility.



# PEOPLE

Our team is the most important part of mutual success  
~50 strong workforce consisting of

## Off-site

- Project Management
- Administration
- Functional Support
- Engineers
- Drafters

## On-site

- Construction supervision
- Mechanical & pipe-fitters
- Boilermakers
- Poly Welders
- Crane operators and riggers
- Electricians
- Plumbers
- Refrigeration Mechanic
- Labourers

# FACILITIES

We're prepared for national, local and regional projects

- Distribution Centre
- Fabrication Workshop, Warehouse & Office  
(Total 5000m with 2500m secured and undercover)
- Vehicles & Machinery
- Expert team of Engineers, Drafters, Project Managers, Sales & Support
- Port Augusta & Whyalla Satellite Offices

---

We invite you to our **Distribution Center in Adelaide**, for a first hand experience of our excellent service.

**Let's Discuss** - [sales@dnsresources.com.au](mailto:sales@dnsresources.com.au)





# PLANT AND EQUIPMENT

List of our plant & equipment for civil works

- Excavators - 2/5/8/15/20/25T
- Prime movers & Drop Deck Trailers
- Water cart
- 5 & 15T Roller
- 13T & 20T tipper trucks
- IT Loaders
- Backhoes
- Light vehicles
- Telehandlers
- 20T Franna Cranes
- Concrete Boom Pump
- Skid Steers
- Vacuum Truck
- Minibuses
- Lighting Towers
- McElroy Polywelding machines
  - 2 x TracStar 250
  - 1 x TracStar 500
- Vacuum Truck



# SITE PROJECT CAPABILITY

Our collective experience provides an unprecedented service across all types/size of projects.



**Procurement**



**Project Management**



**Construction**



**Labour Hire**



**Fabrication**



**Maintenance**

Project	Client	Location	Scope of Work	Year
Silo Upgrade	Cheetham Salt	SA	Design, supply, fabrication, delivery & erection of 1x 120t & 2 60t Silos, including FEA analysis, 3D modelling, drafting, design reporting, SID workshop, QA /QC documentation. Conveyor Stacker Civil supply, Optical Sorter Installation works, drive & crusher rolls replacement, seawater pipe upgrade and maintenance activities.	2022
Honeymoon QA doc development	Boss Energy	SA	Structural, Mechanical, Pipe and Electrical Contracting. The provision of all labour, materials, equipment, work and services necessary to carry out the design, supply, manufacture, assembly, quality assurance, inspection, testing, packaging and identification of the Wellfields and general site construction for the Honeymoon Project in South Australia	2022
Kangaroo Island's seawater desalination plant (John Holland Guidera O'Connor JV)	DSM Civil	SA	Supply, Deliver, Weld, Install and QA/QC of Poly and stainless pipeline for Kangaroo Island Penneshaw Desalination Plant	2022
Kangaroo Island's seawater desalination plant	John Holland Guidera O'Connor JV	SA	Supply, Deliver, Weld, Install and QA/QC of Poly and stainless pipeline for Kangaroo Island Penneshaw Desalination Plant. Under capital works delivery Scope.	2022
Rio Tinto Weipa Site & Olympic Dam Smelter Shut	Kaefer	QLD	Provision of supervision, boilermakers, mechanical fitters, riggers, materials and equipment for various and multiple day/night shutdown works	2022
Carrapateena Copper Concentrate Mine	OZ Minerals	SA	Tailings line upgrade, Camp firewater expansion, LV workshop stormwater upgrade, transmission pump installation, process airline installation, batch plant labour support, HDPE piping supply and welding, equipment replacement and refurbishment.	2022
BHP Loss of Power Project (LoPP) Civil Works Package	Enerven	SA	Civil works package including site establishment, demolition, benching works, concrete and foundation, pit and pipe installation, fencing and gating, drainage and earthing installation for Olympic Dam Risk Remediation project, North Substation.	2022
AGL Torrens Island Battery Energy Storage System	Enerven	SA	Supply, Fabricate, Deliver and Install 275kV Substation Structural Steel.	2022
Port Lincoln Facility	Hallett Construction Materials	SA	Decommission, disassemble, relocate and refurbish Pt Lincoln crusher facility, then design and construct the new mill, tipping skids, self-dumping bins and pneumatic transfer system for the new pilot plant facility in Adelaide.	2022
Roxby Downs	Mine Power Solutions (MPS)	SA	Provision of labour and material services for Smelter 1 pipe removal	2022
Atlas-Campaspe Project, Broken Hill	Tronox Mining	NSW	Primary discharge piping supply, fabrication, weld supervision, QA/QC, packaging and transportation to Broken Hill site.	2022



Project	Client	Location	Scope of Work	Year
RFID Tunnel	BHP	SA	We provided R&D and procurement services across four independent suppliers for the new RFID scanning tunnels at Olympic Dam.	2019
Node Charging Cabinets	BHP	SA	BHP introduced new personal tracking devices throughout the underground operations at Olympic dam. We were engaged to provide R&D, design and construct cabinets to house the new personal node charging stations. Inclusive of all electrical D&C.	2019
CR12 Locker Supply	BHP	SA	The underground operational expansion taking place at Olympic Dam by BHP required the procurement of a new 600 staff changeroom facility. D&S Resources were engaged to supply all ancillary equipment for the changerooms inclusive of over 300 staff lockers and recycled material bench seats, fixtures and fittings.	2019
Scaffolding, Resourcing and Certification Services	Cape AUS Onshore	SA	We investigated the certification process for fibreglass scaffolding for a process plant environment, particularly for Olympic Dam, SA. A feasibility study was conducted to determine if fibreglass scaffolding poles were a viable option, including developing a usage protocol (handling, storing, inspection) for the management of the equipment on site.	2018
West Camden Water Waste Treatment Plant	EnerMech	NSW	Stainless Steel Fabrication of rails, brackets, fittings and pipework.	2018
SCM17 Cladding	BHP	SA	Procurement and delivery of steel sheeting, consumables and insulation, including logistics of transporting 10 x 20-foot shipping containers from overseas.	2017
Hammer Mill	Access Recycling	SA	Reverse engineer and replace oil cooler conveyor shredder system.	2017
Reinforcing Pile Cages	UGL Limited	SA	Fabrication and supply of 22 reinforcing pile cages, delivered to Olympic Dam, SA.	2017
OV Mess Re-roofing	BHP	SA	Supplied 4x20-ft containers comprising of consumables, titles, painting supplies and insulation.	2017
3T Concrete Jersey Barriers	BHP	SA	Supplied 35 concrete barriers including organising, painting and delivery to Olympic Dam required for the road barriers on the mine site.	2017
Roll Machine	Donhad	WA	Manufacture and supply of Drive & Non-Drive Roller components	2016
Extension of site-offices	Monadelphous Group	SA	Supplied a 40-foot container and a shelter dome 12m x 12m, in addition to consumables, tools and machinery for Olympic Dam project site.	2016
APY Landfill – Security Fencing	Toll Mining Services	SA	Supplied 600 metres of compound fencing for the perimeter of three different aboriginal local government areas located in the remote North West of SA (APY lands).	2016
Woomera Accommodation Block, Woomera Village	Intract Australia	SA	Fabrication and supply of a balustrade system, including the procurement of panels, posts and all fixings for timber and concrete.	2016
McArthur River Mine	Lucas Total Contract Solutions	NT	Supply specialised fencing and drainage systems	2016
Smelter Transformation	Lucas Total Contract Solutions	SA	Civil works at Nyrstar – Port Pirie including supplying concrete works consisting of hardstands, concrete pavement, pile caps and secant piling, as well as labour hire for concreting.	2015

# ACCREDITATION

We sustain a high level of service excellence and operations

## ISO 9001 Quality Management System

An international standard for a quality management system (QMS), a company must follow and demonstrate their ability to:



Consistently provide products/services that meet customer and regulatory requirements with continuous improvement.

## ISO 14001 Environmental Management System

An international standard for prescribing a structured approach to environmental protection, it enables companies and organisations of all sizes to:



Develop and implement policies that commit to environmentally responsible and sustainable practices.

## ISO 45001 Occupational Health and Safety

A standard for an occupational health & safety (OH&S) management system, offering guidance in enabling organisations and companies to create



Safe & healthy workplaces by preventing work-related injury and ill health, as well as proactively improving its performance.



# MEMBERSHIPS

We take pride in our advocacy and community engagement



## AIDN

The Australian Industry & Defence Network is a national peak body, supporting Suppliers to Defence/ Security contracts.



## CCF

Civil Contractors Federation is the peak body representing the AUS civil construction industry, providing a unified voice to all levels of Government.



## BUSINESS SA

Business SA offers a range of services, products, advice and training to help businesses get on with the job and reach their potential, including in export markets.



## ICN

Industry Capability Network helps AUS and NZ companies grow, financially supported by Australian, state and territory Government.



## NEL

Northern Economic Leaders is an apolitical business leaders' network that supports growth in northern Adelaide.



## AUSCHAM

The Chamber is a private, non-for-profit with the objective of promoting closer trade links between Australia and Chile.

# OFFICES

We continue our national growth in 2022



## Adelaide (Head Office)

Level 21, 25 Grenfell St  
Adelaide, South Australia  
SA 5088



## Perth

Level 3, 267 Georges Terrace  
Perth, Western Australia  
WA 6000



## Fabrication Workshop and Warehouse

11-15 Maxwell Road  
Pooraka, South Australia  
SA 5096



## Port Augusta

2A Stirling Road,  
Port Augusta, South Australia  
SA 5700



## Brisbane

Level 16, 200 Mary Street  
Brisbane, Queensland  
QLD 4000



# PRINCIPAL CONTACTS

## Eduardo Donoso

Director

T: (08) 8164 1052

M: +61 401 787 425

[eduardo@dnsresources.com.au](mailto:eduardo@dnsresources.com.au)

## Andres Donoso

Managing Director

T: (08) 8164 1050

M: +61 430 059 227

[andres@dnsresources.com.au](mailto:andres@dnsresources.com.au)

## Joe Kelly

Director

T: (08) 7160 0051

M: +61 408 856 821

[joe@dnsresources.com.au](mailto:joe@dnsresources.com.au)

## D&S Resources



+61 8 7160 0051



Level 21, 25 Grenfell St, SA 5000



[admin@dnsresources.com.au](mailto:admin@dnsresources.com.au)



[www.dnsresources.com.au](http://www.dnsresources.com.au)